



Stationary EYELETS

APPLICATION :

Eyelets for Paper Bag, Tags
Files, Lever Arch Mechanism etc.

METAL:

Steel

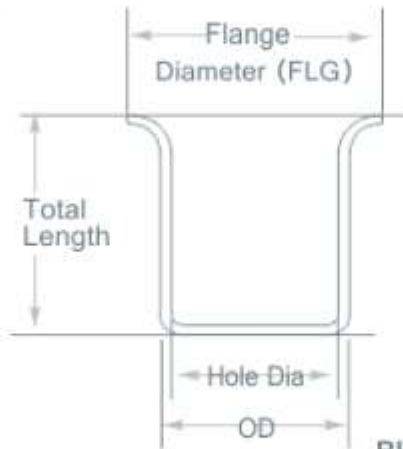
FINISH:

Nickel, Brass

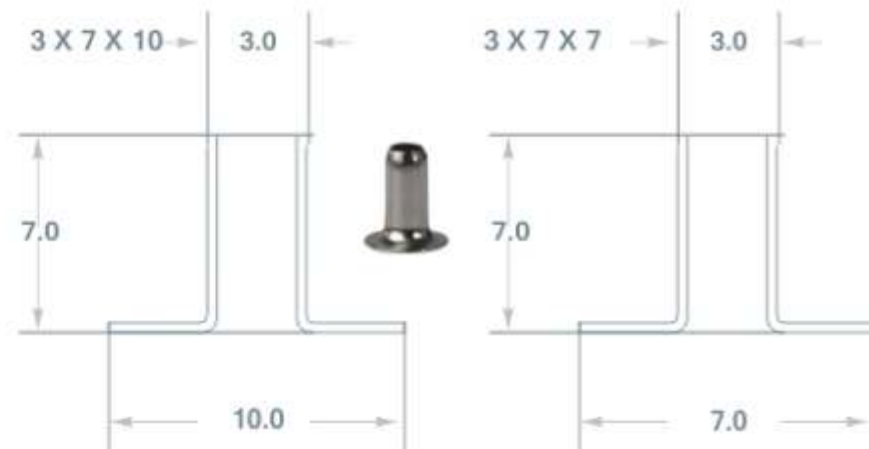
STARTING METAL THICKNESS:

0.23mm, 0.25mm

STATIONARY EYELETS



RIVETS FOR FIXING LEVER ARC MECHANISM TO FILES



PRODUCT	O.D	HOLE	HEAD DIA	T.H.T
24 No.	4.6	3.9	6.6	3.3
25 No.	4.6	3.9	6.6	4.0
8 E	6.0	5.4	8.0	3.5
8 E 4	6.0	5.4	8.0	4.5
8 E 5	6.0	5.2	8.0	5.0
9 E	8.0	7.4	11.0	4.0

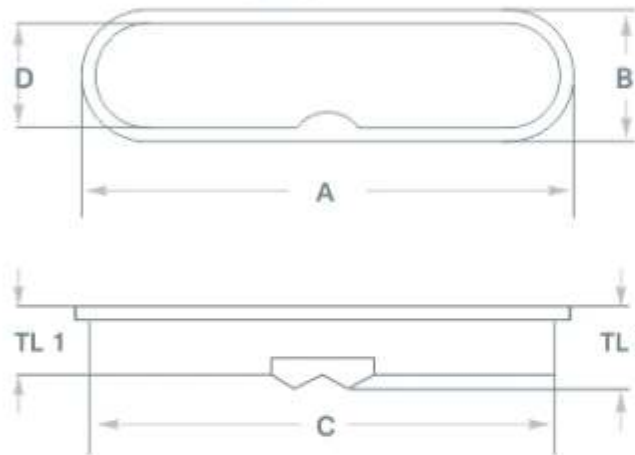
HM-307 AS EYELETING MACHINE (TABLE TYPE)

Throat Depth	4 1/2"
Power	1/4 HP
Stroke	50 m/m
Net Weight	100 kg
Gross Weight	160 kg
Packaging Size	31"L x 25"W x 67"H
Suitable Hardware	Eyelet and Prong snap button
Suitable Diameter	φ 2.5-43mm

File EYELETS



LEVER ARC EYELET

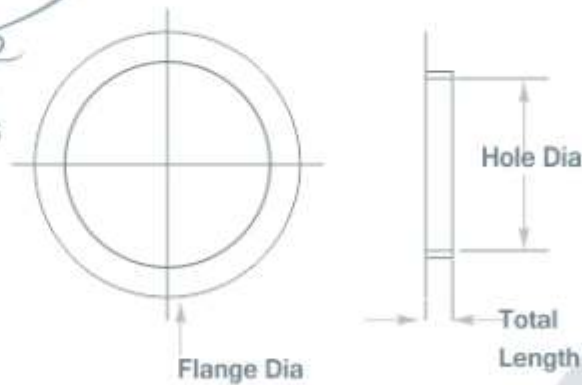


PRODUCT	A	B	C	D	TL 1	TL 2
Arc Eye. 1	41.5	12.5	37.5	8.0	5.0	8.5
Arc Eye. 2	41.0	12.5	36.8	8.5	5.0	-
Arc Eye. 3	41.0	12.5	37.5	8.0	5.0	8.0

STANDARD TOLERANCES IN MM

A : +/-0.10 | B : +/-0.10 | C : +/- 0.10 | D: +/-0.10 | TL1: +/- 0.20 | TL2: +/-0.20z

Finger hole EYELETS



PRODUCT	FLANGE DIA	HOLE DIA	TOTAL LENGTH
Finger Hole Eye 1	29	23.8	5.1
Finger Hole Eye 2	30	25.3	5.3

STANDARD TOLERANCES IN MM

Flange Diameter : +/-0.10 Hole Diameter : +/-0.10 Total Length(T HT.): +/- 0.20