



we create something

precious



DEEP DRAWN COMPONENTS
NAV BHARAT
ELECTRONICS COMPANY



Product Index:

1) Introduction to Company 01
2) Introduction to Eyelets 02
3) Product Index 03
Shoe Eyelets 04
Two Part Rivets 08
Stationary Eyelets 09
Candle Eyelets 11
Hooks 12
Grommets, Tarpaulin Eyelets 15
Metric Eyelets 17
Battery Caps, Fuse Caps 19
4) Our Additional Ranges 21
D' Rings	
Jeans Button	
Prong Snap Button	
Cord Clips	



OUR VALUE :

Everything we do is rooted through one word 'Honesty' – towards ourselves, our customers, our Products.

OUR PHILOSOPHY:

In today's modernized & materialistic world NAVBHARAT has made the balanced growth with nurturing the true value of human being.

OUR CUSTOMER:

Customer is the main pillar for the growth of the organization; hence we always associate with our customers on the long term prospects which are mutually beneficial on both the ends.

NAVBHARAT we prepare ourselves, understand customers requirements & fulfill them to their expectations and try to give best service. This helps us to maintain the good relation with our customer for last long.

DEDICATION & TEAMWORK :

Apart from the declared policy, our team at NAVBHARAT is deeply committed to continuously improving the quality of our products & regular upgrading of its quality of service to its customers. This comes naturally to all those who are associated with us. One of the direct fall - out of this policy is a loyal customer bank, which trusts us & gives us an opportunity to grow with them. Endeavors are always on to increase our customer base by tapping new markets & consolidating on the existing ones.

OUR STRENGTH:

TOOL MAKING :

We have fully Equipped captive tool room to fabricate progressive die, as per customer product specification, from design to commercial production with minimum time.

FINISHING :

We have in house finishing plant to get the consistent finishes of our products.

SAMPLING :

We have separate Pilot for Plant Production & Finishing where the Prototype can be made very easily with shortest time at minimum development cost.

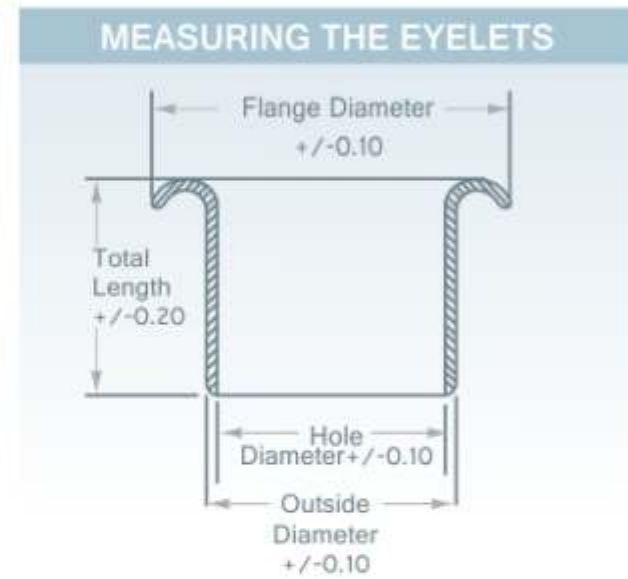
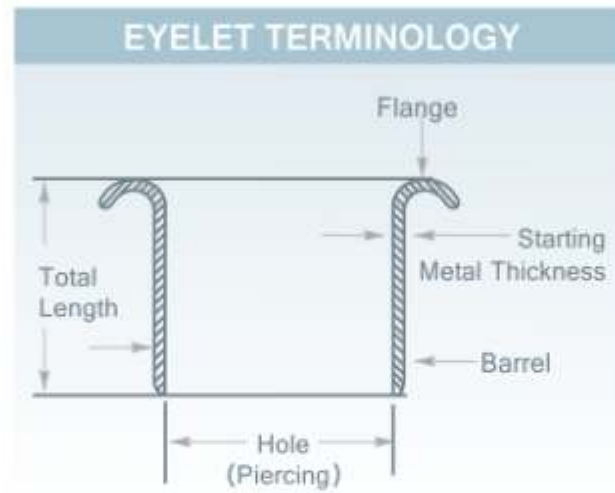
ASSEMBLY MACHINE :

We also offer attaching machine for the Riveting Eyelets.

Introduction to

NAV BHARAT EYELETS

Eyelets have the many applications in the different industries like Leather, Electrical, Automotive, Garment, Furniture, Textiles etc.

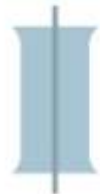


STANDARD TOLERANCES IN MM

Out Side Diameter : ± 0.10 | Hole Diameter : ± 0.10
Flange Diameter : ± 0.10 | Total Length : ± 0.20

THESE ARE THE THREE TYPES TO RIVET THE EYELETS:-

FLARED



ROLL



SCORED



DEPENDING ON THE APPLICATION THERE ARE SOME STANDARD SHAPES COMMONLY USED ARE AS UNDER:

TYPES OF FLANGES:



TYPES OF BARRELS:



TYPES OF WASHERS:



Shoe EYELETS

NAVBHARAT Shoe Eyelets are available in Aluminium, Brass & Steel material with different finishes. Following Quick selection Chart will be helpful to select the Eyelets among the commonly used Industrial sizes in Footwear:

BASIC SHOE EYELETS

Product Name	Outside Diameter	Flange	3.00	3.50	4.00	4.50	5.00	5.50	6.00	6.50	7.00	7.50	8.00	Emb Washer	Neck Washer
200 eyelets	4.5	7.5	✓	✓	✓	✓	✓	✓	✓	✓	✓	✓	✓	✓	✓
300 eyelets	4.5	8.0					✓	✓						✓	
400 eyelets	5.0	9.0				✓	✓	✓	✓	✓				✓	✓
600 eyelets	5.5	9.8			✓	✓	✓	✓	✓	✓	✓			✓	✓
700 eyelets	6.5	11.8					✓		✓		✓			✓	✓
800 eyelets	8.0	13.5								✓				✓	
900 eyelets	10.0	16.5													✓

Product Name	Embossed Washer	Neck Washer
200 washer	✓	✓
300 washer	✓	
400 washer	✓	✓
600 washer	✓	✓
700 washer	✓	✓
800 washer	✓	
900 washer		✓

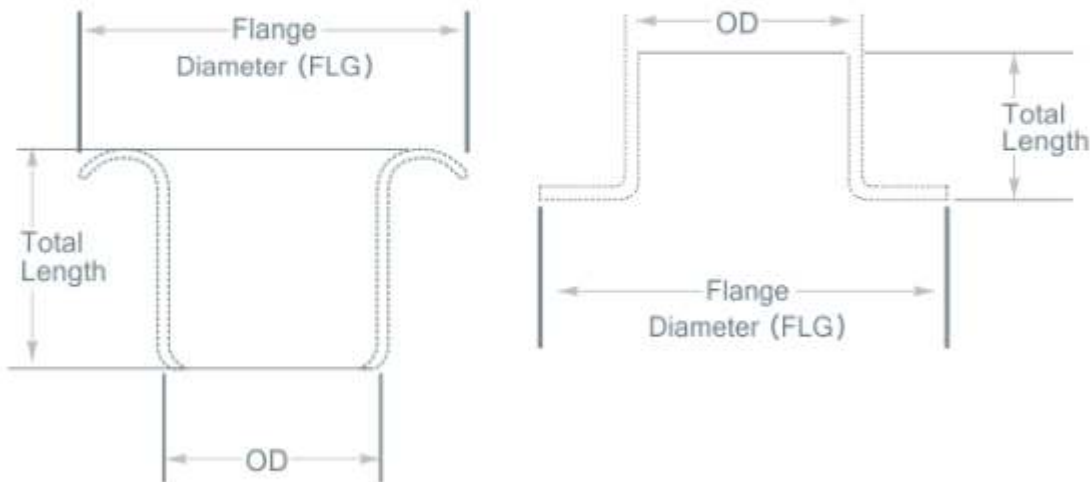


SAMPLE ARE AVAILABLE

CAN BE DEVELOPED ON REQUEST



Aluminum EYELETS



STANDARD TOLERANCES IN MM

Out Side Diameter (OD) : +/-0.10

Flange Diameter (ID) : +/-0.10

Total Length (T.HT) : +/- 0.20

APPLICATION :

Shoe Eyelets are mainly Used in Footwear.

METAL :

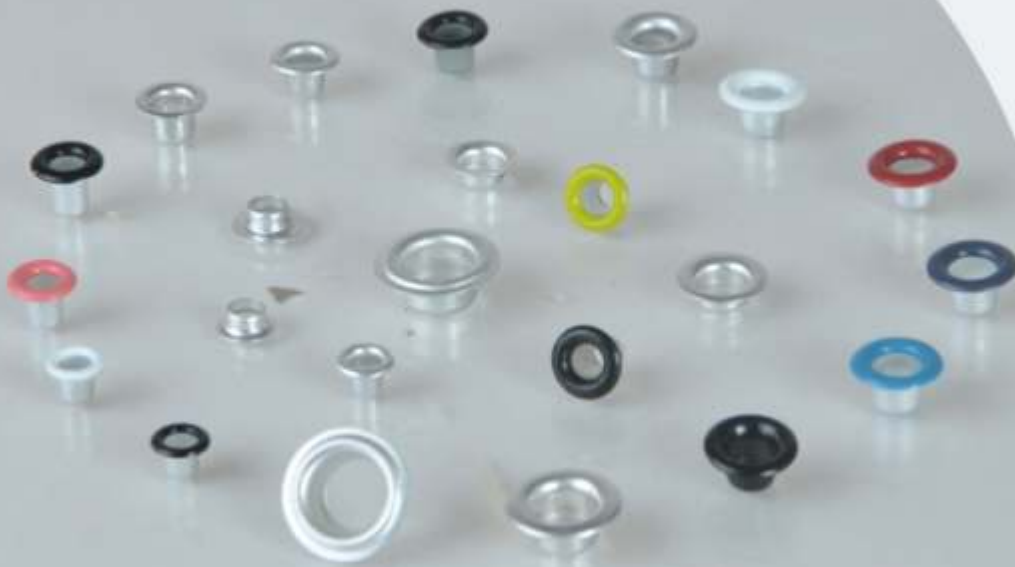
Aluminum, Brass, Steel

FINISH :

Available in Different Finished & Color as per requirement

STARTING METAL THICKNESS:

0.20,0.23,0.25,0.30



ALUMINIUM EYELETS

Product	O.D.	T.H.T	Flange
200 Med	4.7 x 4.3	5.0	7.5
200 Long	4.7 x 4.3	5.7	7.5
200 Neck Washer	5.2	3.5	7.5
400 Long	5.2 x 4.7	6.5	9.0
400 Neck Washer	5.7	3.8	9.8
600 Med	5.7 x 5.2	5.5	9.8
600 Long	5.7 x 5.2	6.5	9.8
600 Flat Flange	6.1	5.5	9.8
600 Neck Washer	6.5	3.8	9.8
700	6.5	6.5	11.8
700 Neck Washer	7.25	4.0	11.8
800	8.5	6.5	14.5
900	10.0	6.5	16.4

SPECIAL ALUMINIUM EYELETS

200 Short	4.7 x 4.3	4.5	7.3
400 XL	5.3 x 4.7	8.0	9.6
700 Short	6.5	8.0	11.8

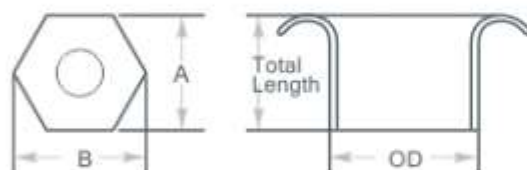
BRASS EYELETS			
Product	O.D.	T.H.T	Flange
Small Invisible	3.45	2.8	6.5
Big Invisible	4.20	3.5	7.5
200 5.0 HT	4.5	5.5	7.5
200 6.0 HT	4.50	6.5	7.5
200 7.0 HT	4.5	6.8	7.5
200 Flat Flange	4.5	5.5	7.5
300 5.5 HT	4.5	5.5	8.0
300 Flat Head	4.5	5.5	8.0
400 5.0 HT	5.0	4.5	9.0
400 6.0 HT	5.0	5.8	9.0
400 6.5 HT	5.0	6.5	9.0
400 (10.00mm Flange)	5.0	5.8	10.0
600 5.0 HT	5.5	4.8	9.5
600 6.5 HT	5.5	6.0	9.8
600 7.0 HT	5.5	7.0	9.8
600 Flat Flange	5.5	6.5	9.8
700 6.0 HT	6.4	6.0	11.8
700 7.0 HT	6.4	7.0	11.8
700 Flat Flange	6.4	7.0	11.8
800 5.0 HT	8.6	5.0	11.8
800 6.5 HT	8.0	6.5	13.6
900 5.0 HT	10.1	5.2	16.5



Different shapes of Eyelets for footwear



HEXAGONAL EYELETS

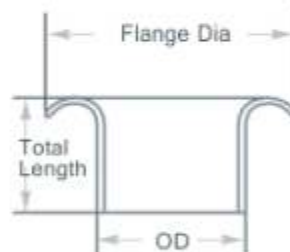


HEXAGONAL EYELETS			
Product	O.D.	T.H.T	Flange A X B
485	5	5.5	8.8 x 10
585 Ht. 6mm	5.2	6	10 x 11.3
585 Ht. 7.5mm	5.2	7.5	10 x 11.3
685	5.6	6	10 x 11.4

Customised logo Eyelets

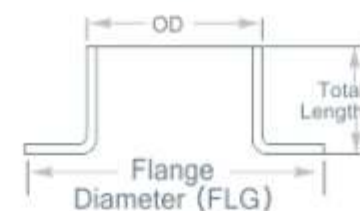


CUSTOMISED EYELETS



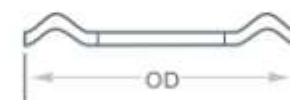
NAMED EYELETS			
Product	O.D.	T.H.T	Flange
200 LINE EMBOSS	4.5	5.5	7.5
400 EMBOSS	5.0	6.0	9.8
600 EMBOSS	5.5	6.0	11.8
585 EMBOSS	5.1	7.5	10.9x12.3

NECK WASHER



NECK WASHER			
Product	O.D.	T.H.T	Flange
200 Neck Washer	5.1	3.8	7.5
400 Neck Washer	6.0	3.5	9.8
600 Neck Washer	6.0	3.6	9.8
700 Neck Washer	7.0	4.0	11.8

EMBOSS WASHER



EMBOSS WASHER			
Product	O.D.	T.H.T	Flange
200 Emb Washer			7.7
400 Emb Washer			10.2
600 Emb Washer			13.8
700 Emb Washer			13.6

ATTACHING MACHINES FOR SHOE EYELETS



HM-307 AS EYELETING MACHINE (TABLE TYPE)

Throat Depth	1 1/2"
Power	1/4 HP
Stroke	50 m/m
Net Weight	100 kg
Gross Weight	160 kg
Packaging Size	31"L x 25"W x 67"H
Suitable Hardware	Eyelet and Prong Snap Button
Suitable Diameter	2.5 - 34mm

HM-307 AS EYELETING MACHINE (TABLE TYPE)

Throat Depth	5"
Power	1/4 HP
Stroke	60 mm
Net Weight	160 kg
Gross Weight	240 kg
Packaging Size	27"L x 26"W x 67"H



HM-307AS



HM-307 US OLIVE EYELETING MACHINE

Throat Depth	4 1/2"
Power	1/4 HP
Stroke	60 m/m
Net Weight	100 kg
Gross Weight	160 kg
Packaging Size	29"L x 27"W x 60"H
Suitable Hardware	Olive shape eyelet
Suitable Diameter	14-25mm

HM-307US

HM-935 AUTOMATIC DOUBLE-SIDE EYELETING MACHINE

Nailing Speed	240 p/min
Power	1/2 HP
Spacing Adjustment	12-35 m/m
Nailing Size	20-600 #
Gross Weight	250 kg
Packing Size	33"L x 23"W x 61"H
Suitable Hardware	Eyelet



HM-935

TWO PART Rivet

METAL :

Brass, Steel

FINISH:

Nickel, Black, Brass, Zinc, Natural,
Full Color, Antique, GunMetal

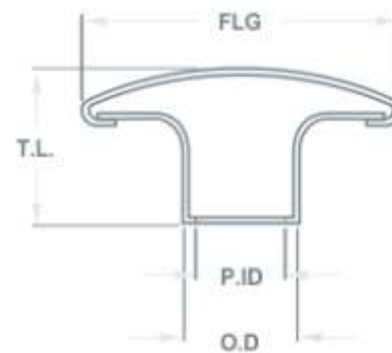
METAL THICKNESS :

0.20mm

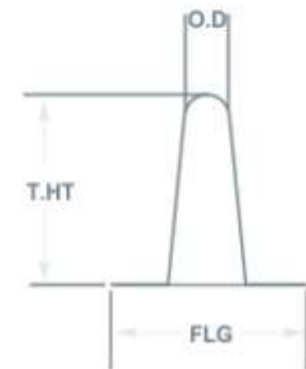


No.	Product Name	O.D.	T.HT.	HEAD/FLG
BRASS TWO PART BUTTON				
1	5 MM Top	3.0	4.0	5.0
2	5 MM Bottom	2.5 x 2.2	5.3	5.2
3	7 MM Top	3.3	4.5	7.0
4	7 MM Bottom	2.9 x 2.6	7.5	8.0
5	7 MM Long Bottom (HT 9.0 MM)	2.9 x 2.6	9.0	8.0
6	9 MM Top	3.9	4.5	9.5
7	9 MM Bottom	3.4 x 3.15	8.5	8.5
STEEL TWO PART BUTTON				
8	7 MM Top	3.3	4.5	7.0
9	7 MM Bottom	2.8 x 2.5	7.3	8.0
10	7 MM Long Bottom (HT 9.0 MM)	2.8 x 2.5	9.0	8.0
11	7 MM (HT 9.0mm, FL 9.5 mm)	2.8 x 2.5	9.0	9.5
12	8 MM Top Steel	3.5	5.0	8.0
13	8 MM Bottom	3.2 x 2.9	8.0	7.3
14	9 MM Top	3.9	4.5	9.5
15	9 MM Bottom	3.5 x 3.2	8.5	8.5
16	9 MM I Bottom (HT 9.3 MM)	3.5 x 3.2	9.3	8.5
17	9 MM Bottom (HT 9.0mm, FL 9.8 mm)	3.5 x 3.2	9.3	9.8

RIVET TOP PART



RIVET BOTTOM PART



■ HM-308AB

HM-308 AB AUTOMATIC DUAL FEEDING OF TOP & BOTTOM PIECES RIVETING MACHINE

Throat Depth	5"
Power	1/4 HP
Stroke	1.97 m/m
Net Weight	165 kg
Gross Weight	245 kg
Packaging Size	27"L x 26"W x 67"H
Suitable Hardware	Cap for Rivet, Rivet
Suitable Diameter	6-12 mm



Stationary EYELETS

APPLICATION :

Eyelets for Paper Bag, Tags
Files, Lever Arch Mechanism etc.

METAL:

Steel

FINISH:

Nickel, Brass

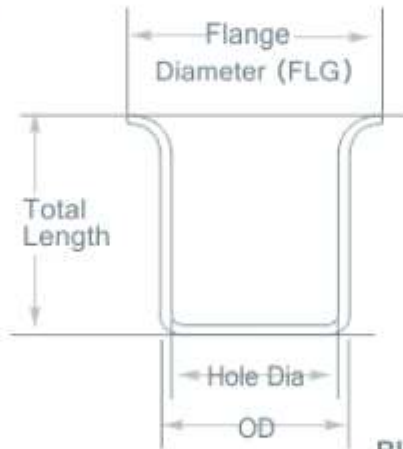
STARTING METAL THICKNESS:

0.23mm, 0.25mm

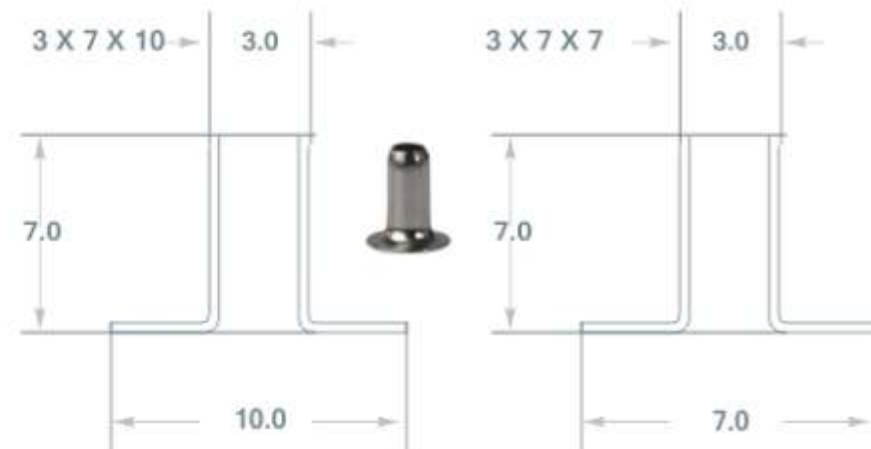
STATIONARY EYELETS



PRODUCT	O.D	HOLE	HEAD DIA	T.H.T
24 No.	4.6	3.9	6.6	3.3
25 No.	4.6	3.9	6.6	4.0
8 E	6.0	5.4	8.0	3.5
8 E 4	6.0	5.4	8.0	4.5
8 E 5	6.0	5.2	8.0	5.0
9 E	8.0	7.4	11.0	4.0



RIVETS FOR FIXING LEVER ARC MECHANISM TO FILES

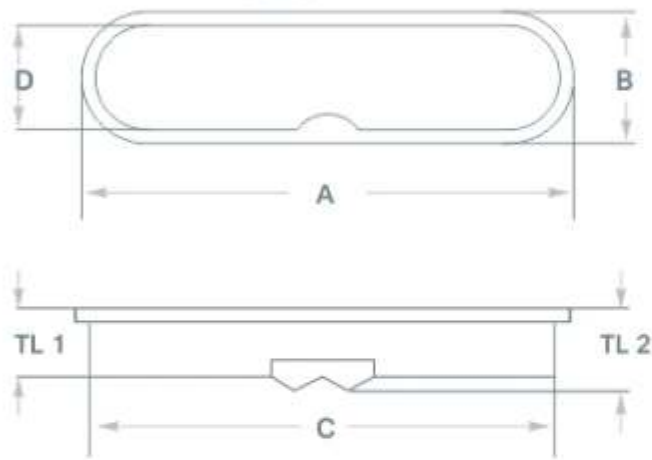


HM-307 AS EYELETING MACHINE (TABLE TYPE)	
Throat Depth	4 1/2"
Power	1/4 HP
Stroke	50 m/m
Net Weight	100 kg
Gross Weight	160 kg
Packaging Size	31"L x 25"W x 67"H
Suitable Hardware	Eyelet and Prong snap button
Suitable Diameter	φ 2.5-43mm

File EYELETS



LEVER ARC EYELET

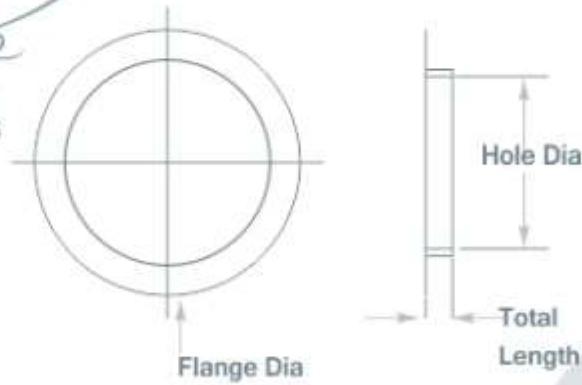


PRODUCT	A	B	C	D	TL 1	TL 2
Arc Eye. 1	41.5	12.5	37.5	8.0	5.0	8.5
Arc Eye. 2	41.0	12.5	36.8	8.5	5.0	-
Arc Eye. 3	41.0	12.5	37.5	8.0	5.0	8.0

STANDARD TOLERANCES IN MM

A : +/-0.10 | B : +/-0.10 | C : +/- 0.10 | D: +/-0.10 | TL1: +/- 0.20 | TL2: +/-0.20z

Finger hole EYELETS



PRODUCT	FLANGE DIA	HOLE DIA	TOTAL LENGTH
Finger Hole Eye 1	29	23.8	5.1
Finger Hole Eye 2	30	25.3	5.3

STANDARD TOLERANCES IN MM

Flange Diameter : +/-0.10 Hole Diameter : +/-0.10 Total Length(T HT.): +/- 0.20

Candle



EYELETS

APPLICATION :

These Eyelets are used in wick assembly for proper fixing of wicks

METAL:

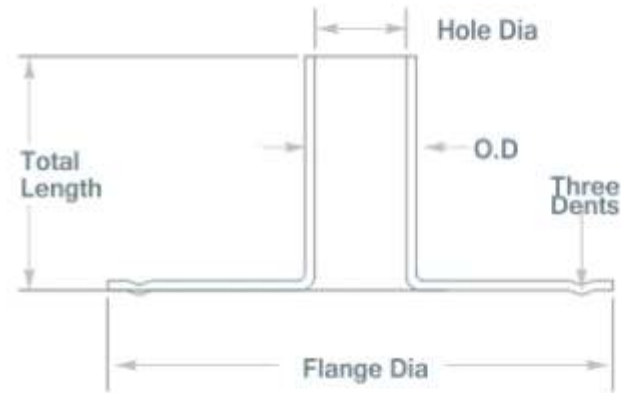
Tin , Steel , Aluminium

FINISH:

Plain, Zinc

STARTING METAL THICKNESS:

0.20,0.23,0.30mm



STANDARD TOLERANCES IN MM

Out Side Diameter (OD) : +/-0.10 | Hole : +/-0.10

Flange Diameter : +/- 0.10 | Total Length (T.HT): +/- 0.20



14 x 6



15 x 3



20 x 9



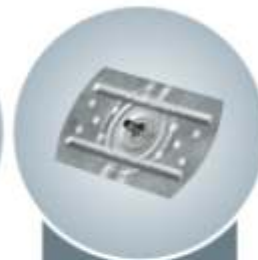
20 x 3



20 x 6



31 x 5



60 x 31 x 5

PRODUCT

O.D.

Hole Dia

Flang Dia

T.HT.

3.5

2.8

13.8

6.0

3.0

2.4

14.8

3.0

3.0

2.4

17.8

9.0

3.5

2.8

19.8

3.5

3.0

2.4

19.8

6.0

3.0

2.4

30.8

5.0

3.0

2.4

60.0 x 31.0

6.0

Shoe Hooks

APPLICATION :

Hooks are mainly used in Safety footwear.

METAL:

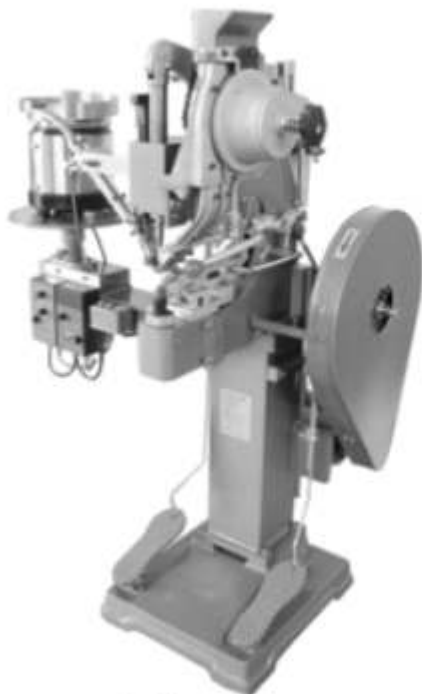
Steel, Brass

FINISH:

Nickel, Brass, Natural, Black

STARTING METAL THICKNESS:

0.40,0.50,0.60,0.70mm



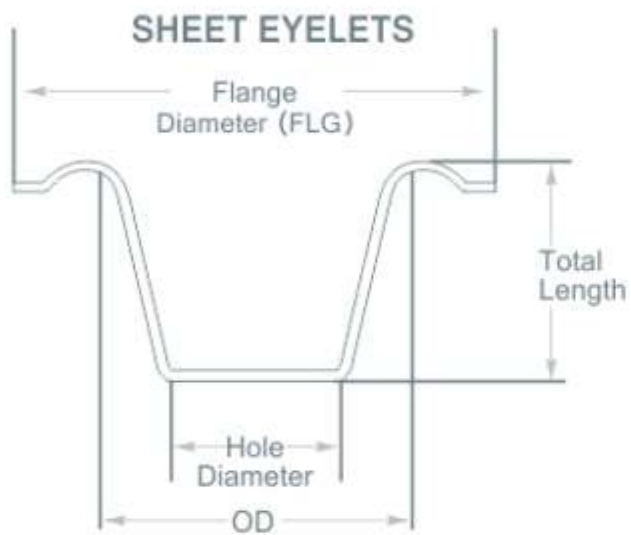
■ HM-608HK



**HM-608HK RIVETING MACHINE SPECIALLY
DESIGNED FOR HOOK RIVETS**

Throat Depth	10"
Power	½ HP
Stroke	60 m/m
Net Weight	180 kg
Gross Weight	250 kg
Suitable Hardware	Hook-Rivets
Suitable Diameter	7013 mm

Setting machine specially designed for the hook-rivets. Double side automatic feeding.



APPLICATION :

These Eyelets are used in Banners, House Hold Tarpaulins.

METAL:

Steel, Brass

FINISH:

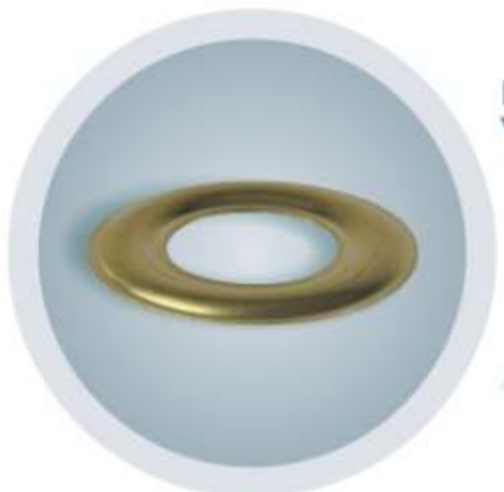
Nickel, Brass, Natural, Zinc

STARTING METAL THICKNESS:

0.30,0.25,0.35mm

SHEET EYELETS

PRODUCT	O.D	HOLE	FLANGE DIA.	T.HT
½" TE	13.5	12.2	26.7	8.5
3/8" TE	10.0	9.2	20.3	6.5
1/4" TE	7.0	6.0	13.5	5.0



FLAT WASHER FOR SHEET EYELETS

PRODUCT	O.D	HOLE DIA.
½" FW	26.8	13.8
3/8" FW	18.0	10.3
1/4" FW	13.8	7.3



Self Pierce

EYELETS

APPLICATION :

Eyelets for Banners, Tarpaulins.

These Eyelets do not require the material to be pre punched.

METAL:

Steel, Brass

FINISH:

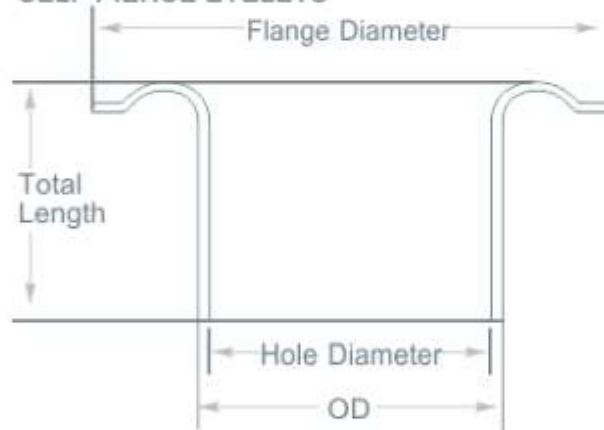
Nickel, Brass, Natural, Zinc

STARTING METAL THICKNESS:

0.30,0.25,0.35mm



SELF PIERCE EYELETS



FLAT WASHER FOR SELF PIERCE EYELETS



SELF PIERCE EYELETS



PRODUCT	28 No. SE	24 No. SE
O.D	12.3	10.0
HOLE DIA	11.5	9.2
FLANGE DIA	24.5	20.5
T.H.T	6.5	6.0

FLAT WASHERS FOR SELF PIERCE EYELETS



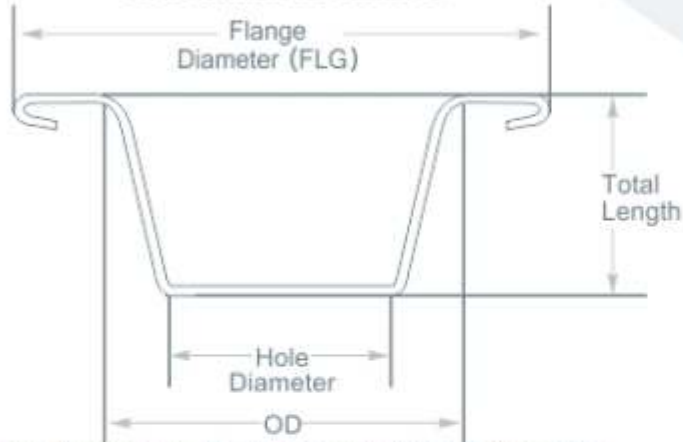
PRODUCT	28 No. FW	28 No. FW
O.D	24.5	13.5
HOLE DIA	20.5	10.5
FLANGE DIA		
T.H.T		



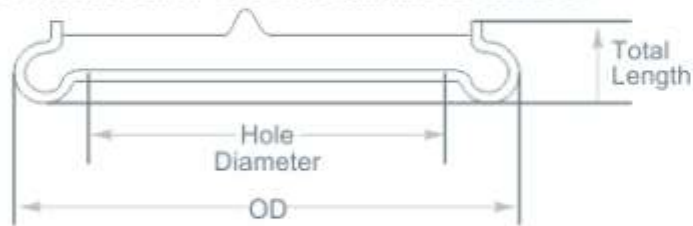
Grommet

EYELETS & WASHERS

GROMMET EYELETS



SPUR WASHER FOR GROMMET EYELETS



APPLICATION :

Grommets where the heavy Strength is required in Tarpaulin, Bags, Banners Etc.. These Eyelets do not require the material to be pre punched.

METAL:

Steel, Brass

FINISH:

Nickel, Brass, Natural, Zinc

STARTING METAL THICKNESS:

0.35,0.45mm

Grommet

EYELETS



PRODUCT	18 No. TE	20 No. TE	24 No. TE	28 No. TE	30 No. TE	35 No. TE	38 No. TE
O.D.	8.0	10.0	12.0	15.0	18.0	21.0	23.0
Hole Dia	7.0	8.5	9.5	11.5	14.5	15.5	20.5
Flange Dia	14.2	17.0	19.2	23.2	28.2	34.5	38.5
T.HT.	5.5	6.5	7.0	9.0	9.5	38.5	13.5

Spur Washer for Grommet

EYELETS



PRODUCT	18 No. TE	20 No. TE	24 No. TE	28 No. TE	30 No. TE	35 No. TE	38 No. TE
O.D.	14.0	16.5	20.0	24.0	28.2	33.0	38.0
Hole Dia	8.2	10.5	12.0	12.0	17.5	19.0	23.0
T.HT.	4.0	4.0	4.0	4.0	5.0	5.0	6.0

Tarpaulin

EYELETS

APPLICATION :

Eyelets for Plastic Tarpaulin, Canvas Tarpaulin etc.

METAL:

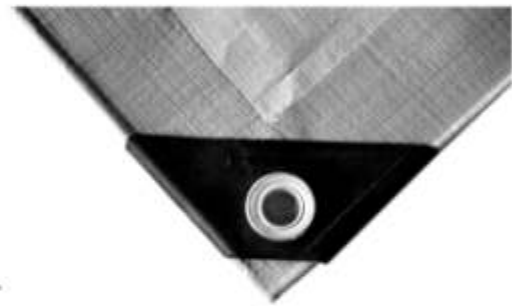
Steel, Brass, Aluminum

FINISH:

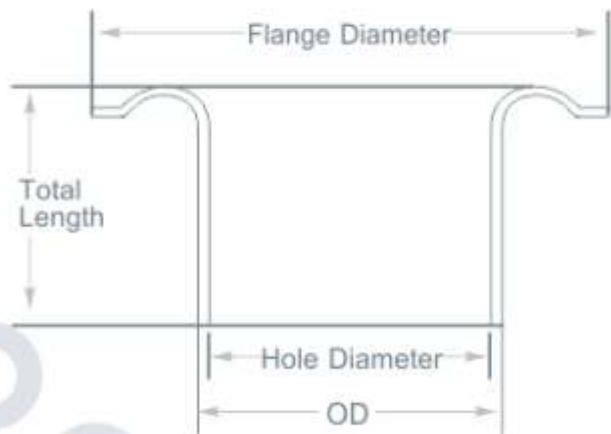
Nickel, Brass, Natural, Zinc

STARTING METAL THICKNESS:

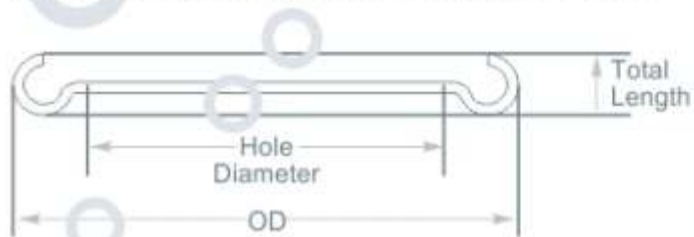
0.30,0.20



TARPAULIN EYELETS



TURN OVER WASHER FOR TARPAULIN EYELETS



TARPAULIN EYELETS				
PRODUCT	O.D	HOLE DIAMETER	FLANGE DIAMETER	T.H.T
24 No. TAE	10.0	8.5	17.8	6.0
28 No. TAE	12.6	12.0	23.0	7.0
30 No. TAE	15.5	15.0	28.5	8.0

TURN OVER WASHER FOR TARPAULIN EYELETS			
PRODUCT	O.D	HOLE DIAMETER	T.H.T
24 No. TAE	18.0	10.2	2.0
28 No. TAE	23.0	13.0	2.2
30 No. TAE	27.0	16.0	3.0

Metric
EYELETS



APPLICATION :

Umbrella Industries
PCB Assembling
Electrician Assemblies

METAL :

Brass, Steel, Aluminum

FINISH:

Nickel, Black, Brass, Copper, Tin, Zinc, Natural Metal

THICKNESS :

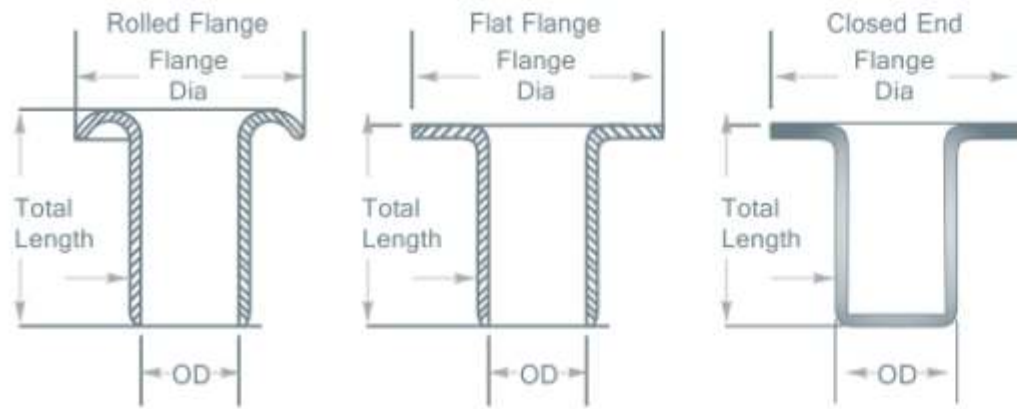
0.15, 0.20, 0.30mm

HM-307 AY MINI EYELETING MACHINE

Throat Depth	4 1/4"
Power	1/4 HP
Stroke	34 m/m
Net Weight	70 kg
Gross Weight	126 kg
Packing Size	44 1/4"L x 26"W x 42 1/2"H
Suitable Hardware	Eyelet
Suitable Diameter	1-7mm



NAV BHARAT METRIC EYELETS CAN BE MADE IN FOLLOWING TYPES :



STANDARD TOLERANCES IN MM

OD : +/-0.05

Flange Diameter : +/-0.10

Hole Diameter : +/-0.10

Total Length (T.HT): +/- 0.20

METRIC EYELETS DIMENSION

Outside Diameter	Flange	TOTAL HEIGHT																	
		2.00	2.50	3.00	3.50	4.00	4.50	5.00	5.50	6.00	6.50	7.00	7.50	8.00	8.50	9.00	9.50	10.00	
1.2	2.8		✓	✓	✓														
1.3					✓	✓	✓												
1.4																			
1.5	3	✓	✓	✓	✓	✓	✓												
1.6			✓	✓	✓	✓													
1.7				✓	✓	✓	✓	✓											
1.8						✓													
1.9	3.5																		
2			✓		✓	✓	✓	✓	✓				✓	✓					
2.1																			
2.2	4																✓		
2.3				✓		✓	✓		✓		✓	✓	✓	✓					
2.4						✓				✓									
2.5				✓				✓		✓		✓		✓					
2.6	4.5						✓												
2.7					✓														
2.8																			
2.9	5							✓											
3		✓	✓	✓	✓	✓	✓	✓	✓	✓	✓	✓	✓	✓	✓			✓	
3.1								✓					✓	✓					
3.2					✓														
3.3	5.5																		
3.4																			
3.5						✓			✓								✓		
3.6									✓										
3.7	6																		
3.8				✓			✓			✓									
3.9																			
4		✓	✓	✓	✓	✓	✓	✓	✓	✓	✓					✓		✓	✓

✓ SAMPLE ARE AVAILABLE CAN BE DEVELOPED ON REQUEST



R3 TOP



R3 BOTTOM



R14 TOP



R6 TOP



R6 BOTTOM

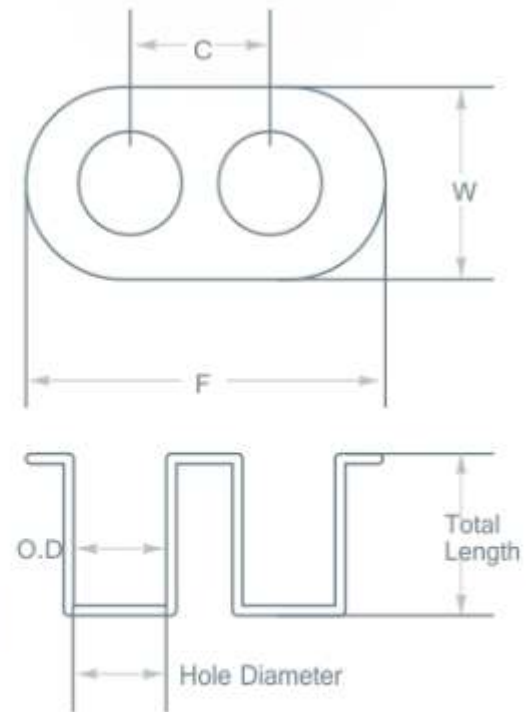


R20 BOTTOM

Battery CAPS

APPLICATION :
 These Top & Bottom Caps are used in AA,AAA Batteries
METAL : Tin, Steel, Brass
FINISH : Nickel
STARTING METAL THICKNESS: 0.20mm

Barrier Terminal EYELETS



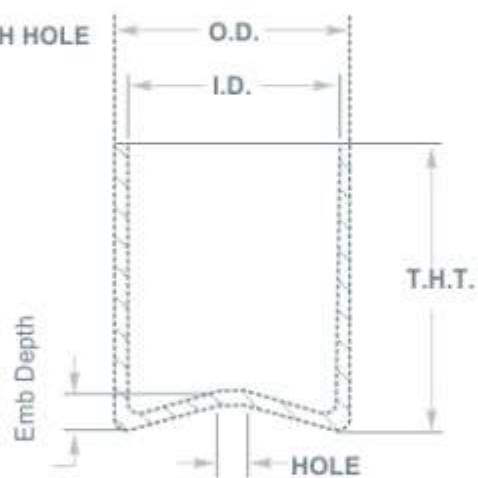
PRODUCT	O.D	FLANGE	F	C	W	T.H.T
Small DB Eyelet	2.5	1.5	11.0	7.0	4.5	4.5
Med DB Eyelet	3.5	2.5	14.5	8.0	6.5	5.0
Big DB Eyelet	4.0	2.8	18.0	11.0	7.5	6.5



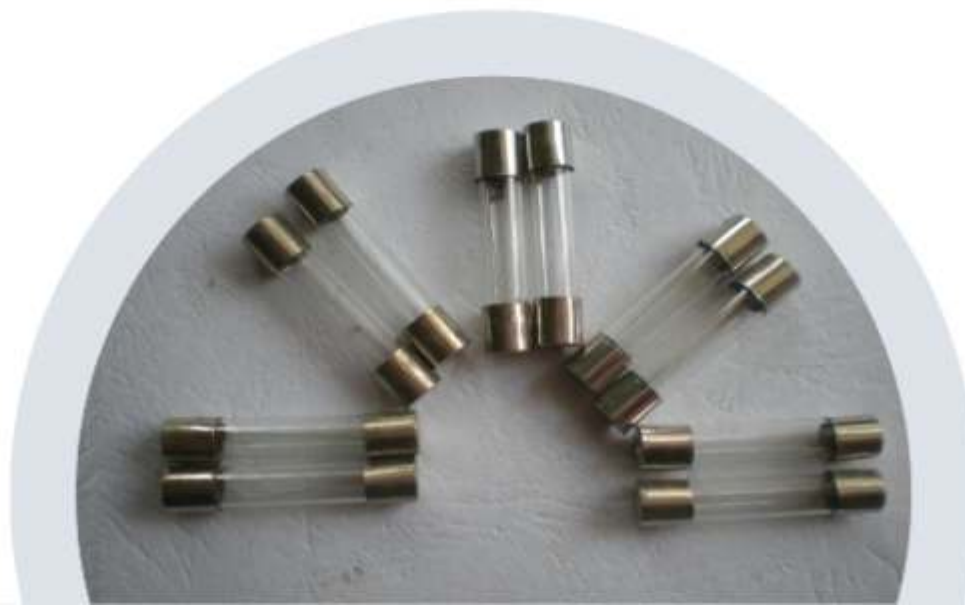
Fuse Cap

EYELETS

FUSE CAPS WITH HOLE



PRODUCT	O.D.	I.D.	HOLE DIAMETER	T.H.T
4.6 Plain	5.15	4.60	-	5.00
4.7 Plain	5.15	4.70	-	5.00
4.8 Plain	5.15	4.80	1.20	5.00
4.9 Plain	6.25	4.90	-	5.00
5.9 Plain	6.25	5.90	1.20	6.20
6.0 Plain	6.35	6.00	-	6.20
6.0 Plain	6.35	6.00	1.80	6.20



OUR ADDITIONAL RANGES ARE

D' Rings

APPLICATION :

D'Rings are used in various Industries Like Bag, Garment, Leather etc.

METAL:

STEEL, BRASS

FINISH:

Nickel, Brass, Natural, Black or as per requirement.



Jeans Buttons

APPLICATION :

Jeans Buttons are used mainly in Garment & Fashion Industries.

METAL:

Stainless Steel, Steel, Brass

FINISH:

Nickel, Brass, Natural, Black or as per requirement.

Prong Snap Button

APPLICATION :

Prong Snap Button are used mainly in Garment & Fashion Industries

METAL:

Steel, Brass

FINISH:

Nickel, Brass, Natural, Black or as per requirement.



Cord Clips

APPLICATION :

Cord Clips are used to Crip the Cord End.

METAL:

Steel, Brass

FINISH:

Nickel, Black

METAL THICKNESS :

0.25,0.35,0.45,0.55mm

DEEP DRAWN COMPONENTS
NAV / BHARAT
ELECTRONICS COMPANY

The Truly Riveting Performance.





DEEP DRAWN COMPONENTS
NAV BHARAT
ELECTRONICS COMPANY

FACTORY & OFFICE :

NAVBHARAT ELECTRONICS COMPANY

Plot No.: 739 & 740, New G.I.D.C., Phase-II, Gundlav-396035, Dist : Valsad, Gujarat (INDIA).

Telefax: +91 2632 237086/ 237028/ 237088, E-mail: nbec_eyelets@hotmail.com, web: www.navbharateyelets.com